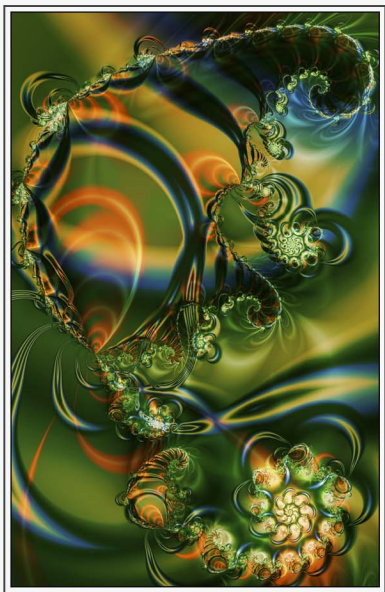
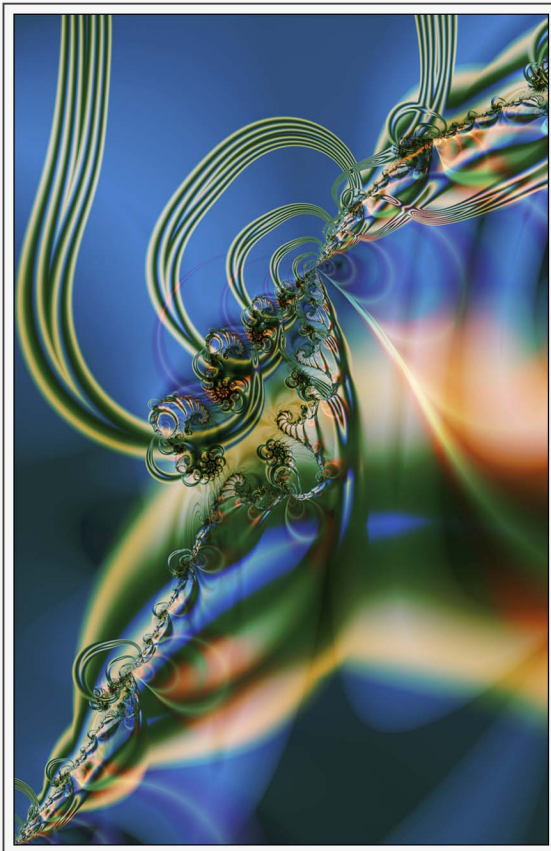


HEAVY EVERYWHERE®
DIGITAL PRINT CATALOGUE
2008

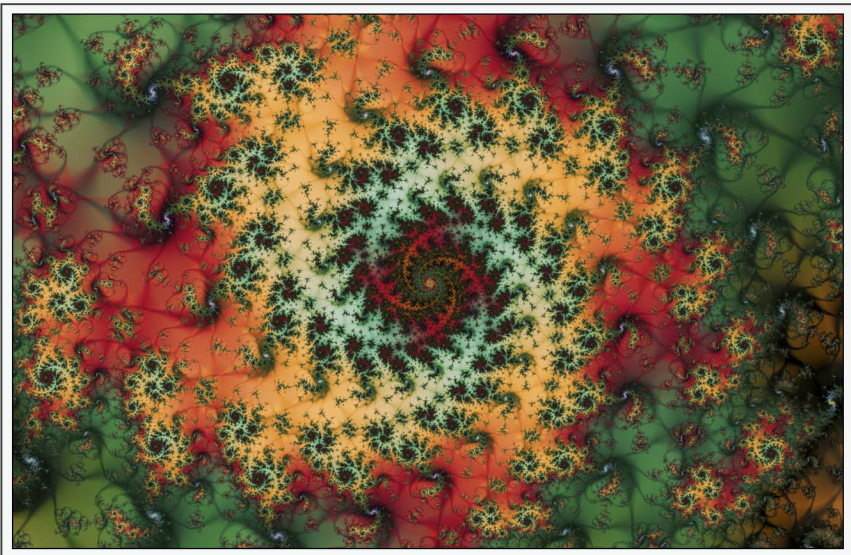


COPYRIGHT © 2008 HEAVY EVERYWHERE LTD. ALL RIGHTS RESERVED



ORGANIX #6

COPYRIGHT © 2008 HEAVY EVERYWHERE LTD. ALL RIGHTS RESERVED



GALACTIC # 11

COPYRIGHT © 2008 HEAVY EVERYWHERE LTD. ALL RIGHTS RESERVED



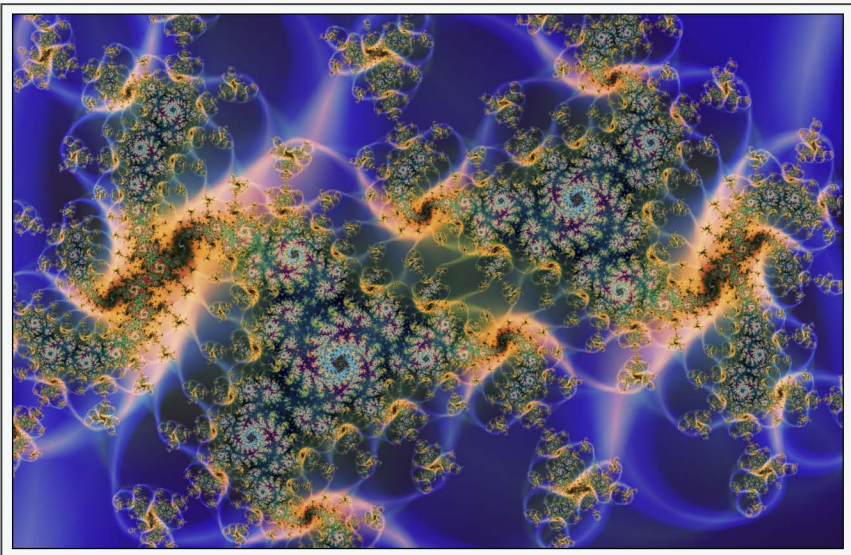
PRIMEVAL #4

COPYRIGHT © 2008 HEAVY EVERYWHERE LTD. ALL RIGHTS RESERVED



GOSSAMER #4H

COPYRIGHT © 2008 HEAVY EVERYWHERE LTD. ALL RIGHTS RESERVED



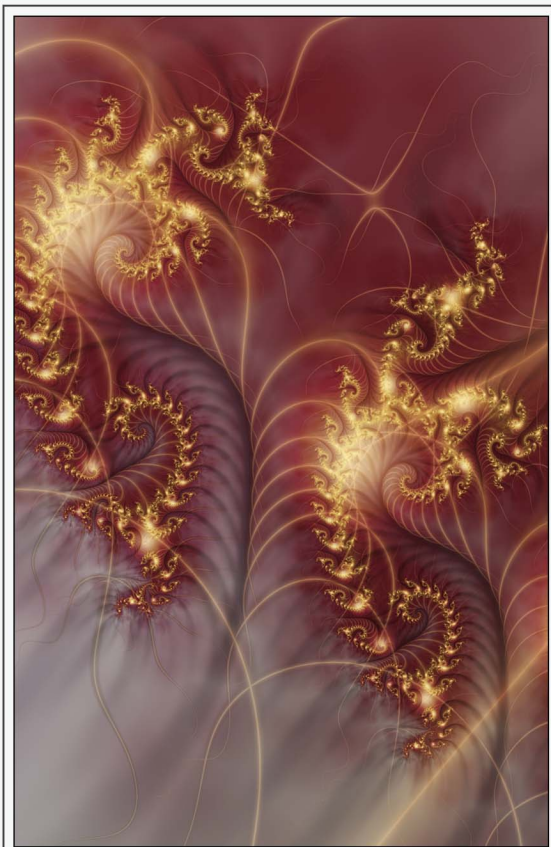
GALACTIC #5

COPYRIGHT © 2008 HEAVY EVERYWHERE LTD. ALL RIGHTS RESERVED



PRIMEVAL_NEW #6

COPYRIGHT © 2008 HEAVY EVERYWHERE LTD. ALL RIGHTS RESERVED



GOSSAMER #6A

COPYRIGHT © 2008 HEAVY EVERYWHERE LTD. ALL RIGHTS RESERVED



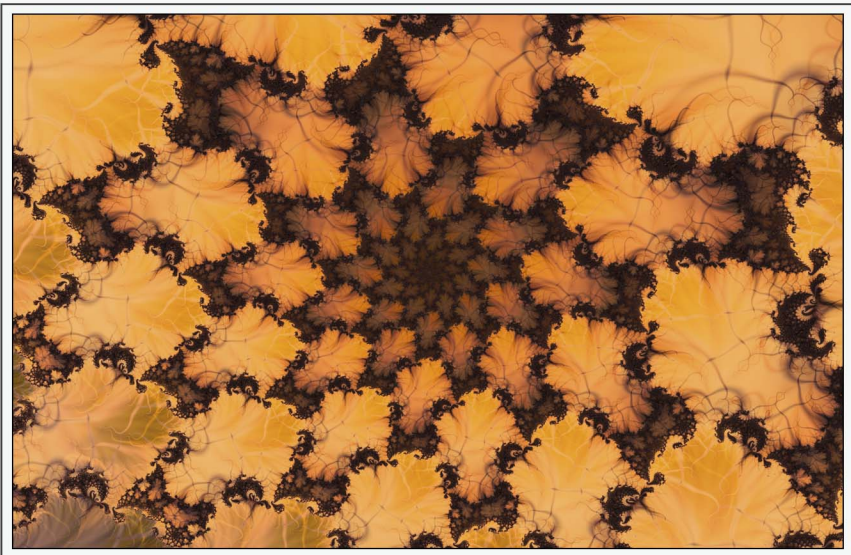
OUTER/INNER SPACE #5

COPYRIGHT © 2008 HEAVY EVERYWHERE LTD. ALL RIGHTS RESERVED



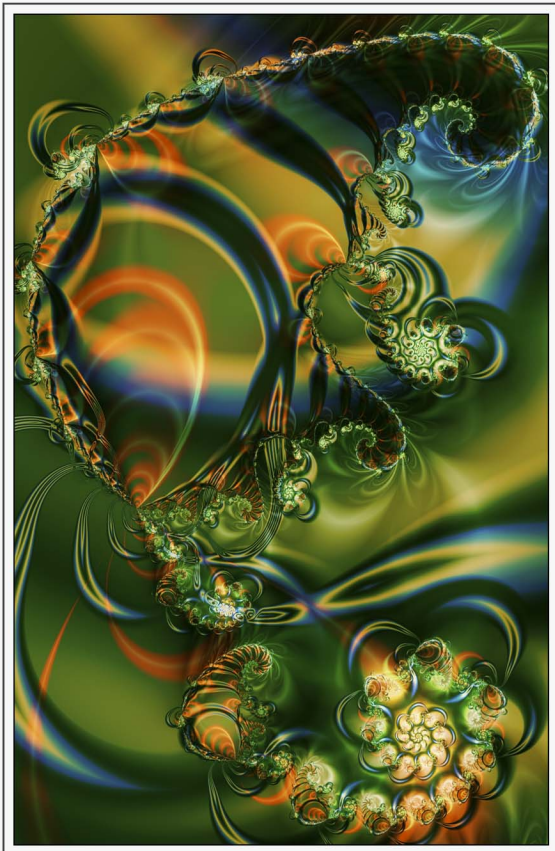
UNDERWORLD #6

COPYRIGHT © 2008 HEAVY EVERYWHERE LTD. ALL RIGHTS RESERVED



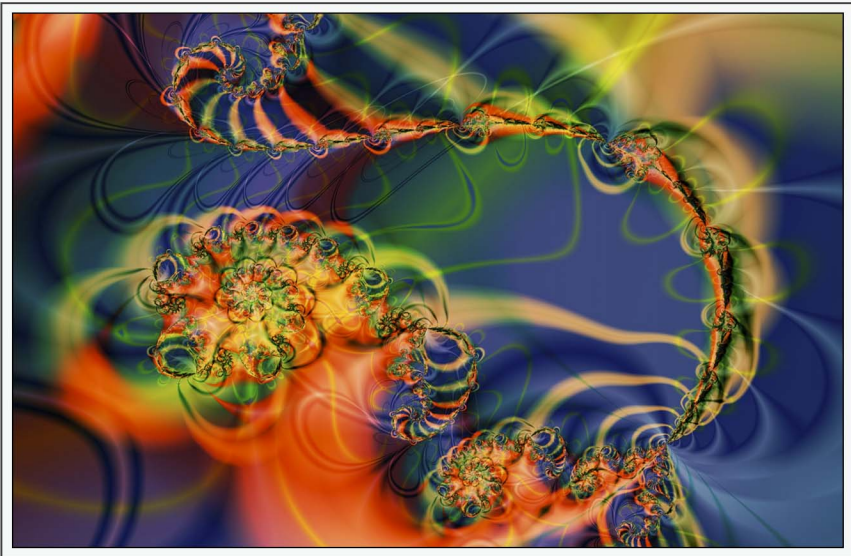
OUTER/INNER SPACE #2

COPYRIGHT © 2008 HEAVY EVERYWHERE LTD. ALL RIGHTS RESERVED



ORGANIX #4

COPYRIGHT © 2008 HEAVY EVERYWHERE LTD. ALL RIGHTS RESERVED



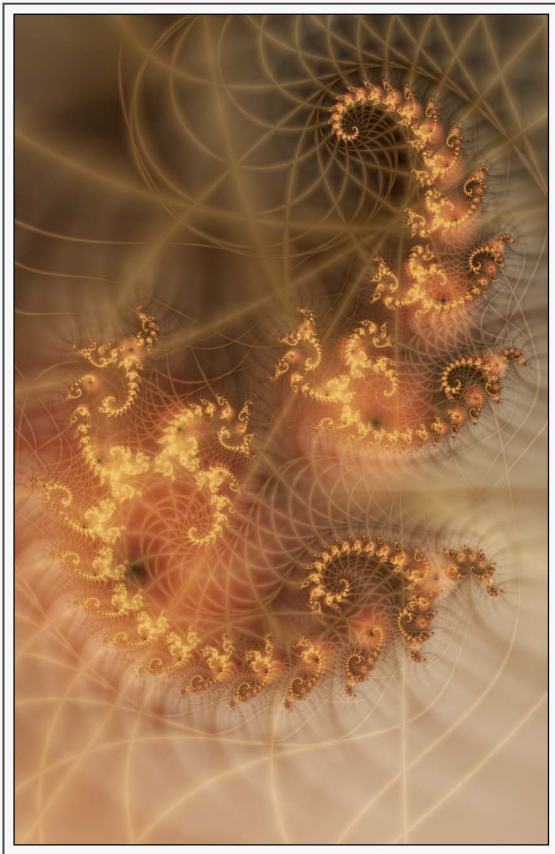
GARDEH #1H3

COPYRIGHT © 2008 HEAVY EVERYWHERE LTD. ALL RIGHTS RESERVED



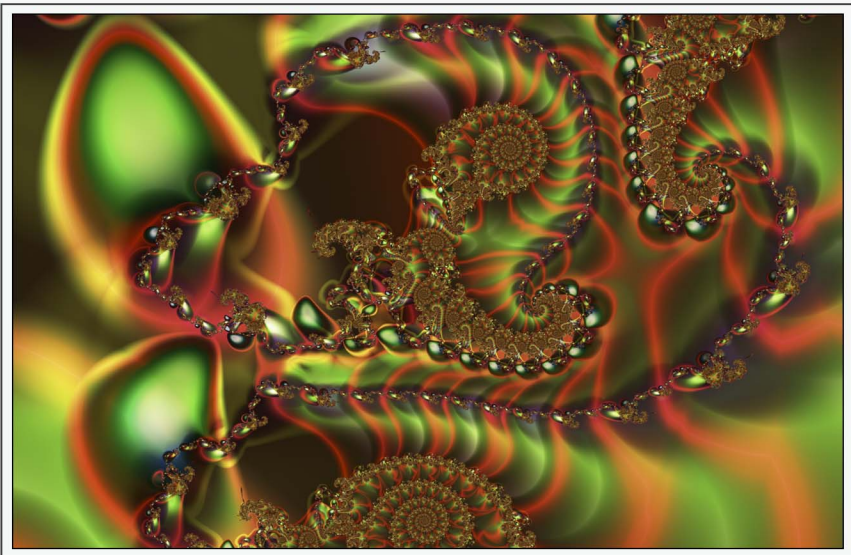
PRIMEVAL #3

COPYRIGHT © 2008 HEAVY EVERYWHERE LTD. ALL RIGHTS RESERVED



GOSSAMER #7B

COPYRIGHT © 2008 HEAVY EVERYWHERE LTD. ALL RIGHTS RESERVED



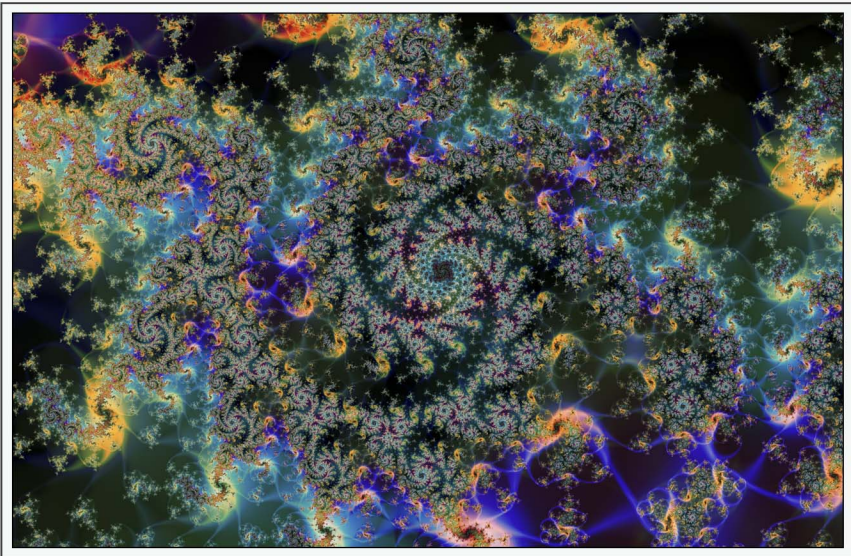
INSECTOID # 1

COPYRIGHT © 2008 HEAVY EVERYWHERE LTD. ALL RIGHTS RESERVED



ORGANIX #9

COPYRIGHT © 2008 HEAVY EVERYWHERE LTD. ALL RIGHTS RESERVED



GALACTIC #8

COPYRIGHT © 2008 HEAVY EVERYWHERE LTD. ALL RIGHTS RESERVED



OUTER/INNER SPACE #3

COPYRIGHT © 2008 HEAVY EVERYWHERE LTD. ALL RIGHTS RESERVED



UNDERWORLD #5

COPYRIGHT © 2008 HEAVY EVERYWHERE LTD. ALL RIGHTS RESERVED

ABOUT THE ARTIST

Phil Wolstenholme is a photographer and digital artist, and has been active in the field for over 20 years.

Originally a fine-art graduate of Sheffield Hallam University, Phil specialises in computer-based images for both personal and commercial works, producing many notable album covers, magazine illustrations, posters and animation for video, receiving a silver disc in 1992 for work on The Orb's 'U.F. Orb' album.

Other clients for album cover work have included Warp Records, Cabaret Voltaire, The Shamen, The Lovers, Sony Music and orchestral composer Gavin Bryars. Phil also produced and co-directed 'Motion', the first 3D animation video released on an independent label in 1994.

Phil has also worked extensively in software development, co-designing award-winning 3D animation and image-making software, demonstrating at trade shows, and producing documentation/tutorials and website design.

More recently, Phil showed a new series of artworks in a joint exhibition entitled 'Imagine', at La Chartreuse de Valbonne, an historical monument in the south of France, and which is documented on the exhibition website: www.imaginelounge.com

Heavy Everywhere® is the publishing imprint for Phil's fractal works, which are designed for, and are being used in fabric production, contemporary fashion, interior design and print.

The first Heavy Everywhere® print collection is presented here, and showcases computer-generated abstracts of outstanding quality and vision, designed to engage the mind and the eye in equal measure.

To see more of Phil's work, please visit:
www.heavyeverywhere.co.uk
www.pwhole.com

PRINT FORMATS

The designs are currently available as Giclee art prints on stretched canvas in two sizes, 60 X 40 cm and 90 X 60cm. The frames are available in Slimline (2cm deep) and Heavy (4.5cm deep) sizes.

The prints are reproduced at 450dpi, giving astonishing levels of detail, and use Epson archival inks for permanence, guaranteed up to 70 years under optimum conditions. Each print is signed by the artist and a certificate of authenticity is presented with every item.

PRICES

60 X 40 Slimline frame: £140.

60 X 40 Heavy frame: £150.

90 X 60 Slimline frame: £200.

90 X 60 Heavy frame: £220.

Postage and packing in the UK by insured courier service is available at £30 extra - please enquire about collections/local delivery.

Payment is via cash, cheque or Paypal at time of order, and prints will be produced when payments have cleared. Please allow 7 days for production and delivery.

Larger print sizes can be produced on a variety of materials by arrangement - please contact us for more details:

Phone: 0114 255 9976

Email: sales@heavyeverywhere.co.uk

Website: www.heavyeverywhere.co.uk